

**NEW**

# TraceCam becomes MoveInspect DPS

MEASURE THE ADVANTAGE



**AICON's dummy positioning system TraceCam, which is applied during vehicle testing, gets a facelift: TraceCam becomes MoveInspect DPS.**



## What does that mean?

The DPS hardware is adapted to AICON's technology platform MoveInspect Technology. This platform brings together various portable coordinate measuring systems that use a digital camera for data collection and can be applied for many different measuring tasks.

Thanks to the integration of DPS into the MoveInspect Technology, the former specialized dummy positioning system also works as a coordinate measuring machine from now on. This combination is absolutely unique!

Next to the usual probe and the adapters that are to be placed on the dummy, the MoveInspect DPS system is delivered with the MoveInspect camera bar and will use three MoveInspect HR cameras having 5 megapixels each.

## Extendable for nearly every measuring task

Your advantage: MoveInspect DPS works in a measuring volume of up to 5m, also as a coordinate measuring machine. If you suddenly face other measuring tasks, you can simply extend your MoveInspect DPS system by adding other components from the MoveInspect Technology.

An example: You are requested to do dynamic measurements? No problem. MoveInspect Technology also features high-frequency cameras that can easily be combined with the MoveInspect DPS equipment. Of course, the extended configuration is based on the same software. You only need an extra module that is dedicated to dynamic measuring.

Or would you like to cover a higher measuring volume? Also this measurement task can be solved by merely adding a few additional components from the MoveInspect Technology.



AICON 3D Systems GmbH  
Biberweg 30 C  
D-38114 Braunschweig  
tel. +49 (0)531-58 000 58  
fax +49 (0)531-58 000 60  
info@aicon.de  
www.aicon3d.com

## Rotating camera bar

The camera bar that is used with MoveInspect has a swivel-mount, which makes it possible to rotate the bar from a horizontal to a vertical position. In the area of dummy positioning, the vertical position is especially useful when the dummy is supposed to be placed in a compact car. Thus, the viewing field of the three cameras is optimally directed to the relevant measuring points.



## MoveInspect DPS vs. articulated arm

Partly articulated arms are applied for doing coordinate measurements next to dummy positioning. However, there is a lack of special software dedicated to dummy positioning.

In contrast, the DPS software has been specially developed for the purpose of dummy positioning. It controls the 3D position of the dummy relative to the vehicle during the positioning process. With the help of measuring points or adapters, the current dummy position is recorded in real time, and compared to nominal data.

The differences between the target positions and reference positions are displayed graphically or numerically. With all points on the dummy measured and displayed simultaneously in vehicle coordinates, the technician can quickly put the dummy into its target position. Movements of the vehicle that are caused by the positioning of the dummy are compensated automatically because of continuous monitoring of a set of targeted reference points. Only AICON's DPS software is able to do that!

Beyond that, the operator can move freely around the object to be measured as there is no connection between sensor and probe, in contrast to articulated arms.

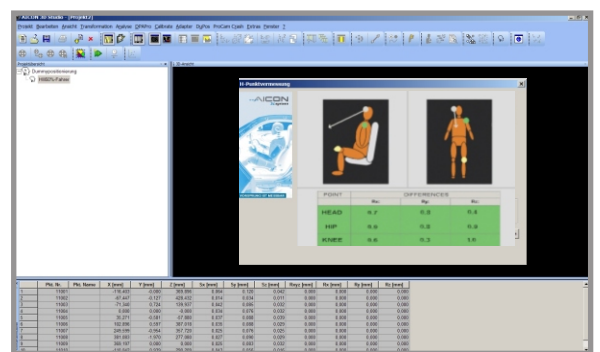
## MoveInspect DPS, consisting of:



Camera bar



Probe and adapters



Software

## Conversion of existing DPS systems to MoveInspect DPS

Do you apply a DPS system in your company, and are you interested in converting the existing system to MoveInspect DPS? Then, please contact Mr. Mathias Wolf who will be happy to inform you about the details:

Phone +49 (0)531 - 58 000 69 / email mathias.wolf@aicon.de